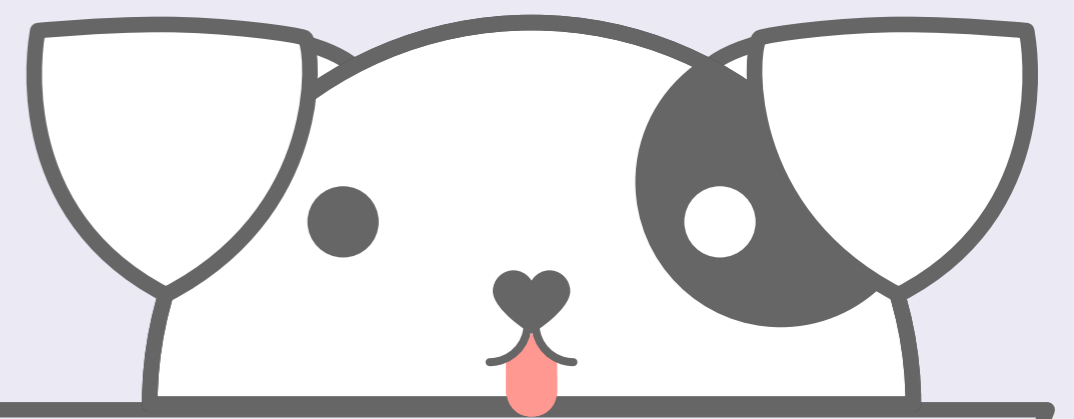


HOW TO STORE



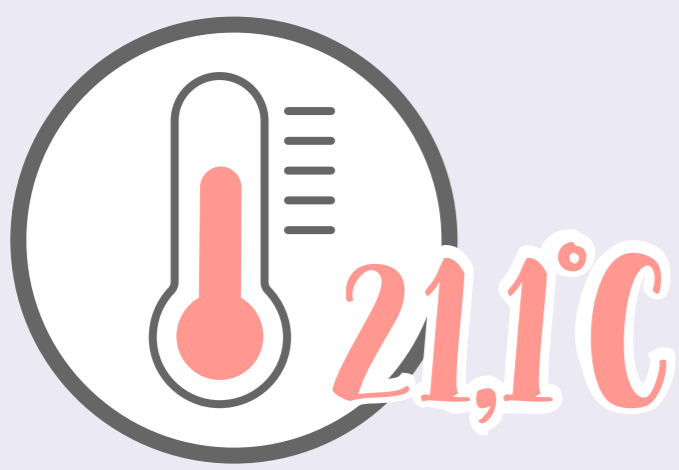
MONTEGO DRY FOOD

Mould, insects, funny smells, weird looking kibble? Don't worry, we've put together some tips to assist with these concerns, as well as a storing guide that will help keep your Montego kibble as fresh as the day it was bought:

TIP 1:

STORE IN A COOL, DRY PLACE.

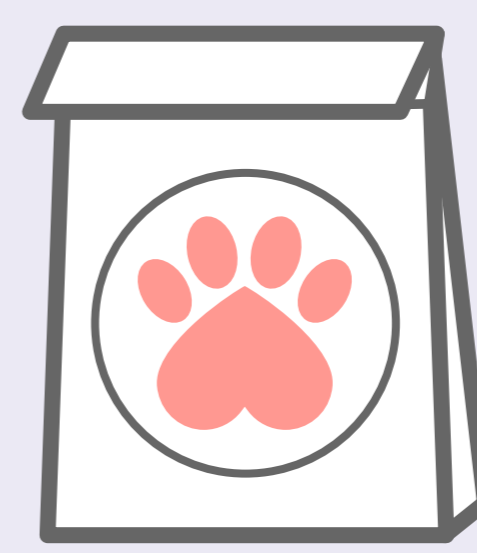
Moisture and humidity can cause mould and fermentation. Ideally, dry dog food should be stored at a temperature of less than 21.1°C and at less than 15% humidity.



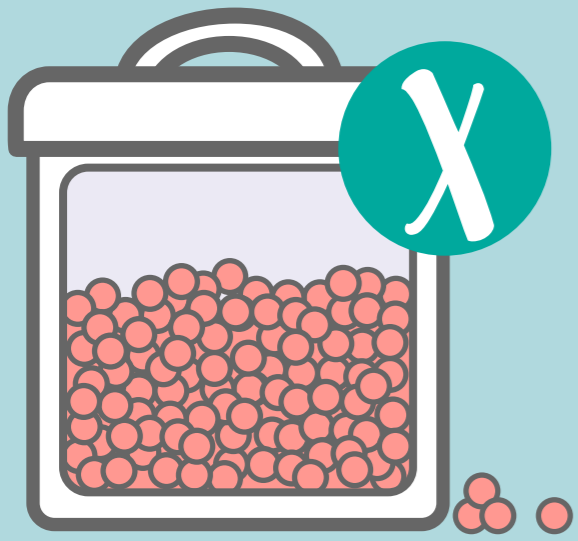
TIP 2:

STORE THE FOOD IN ITS ORIGINAL BAG.

Our packaging is designed to protect the kibble from excess oxygen and humidity. Once opened, simply squeeze the air from the bag before folding tightly closed.



PLEASE NOTE:



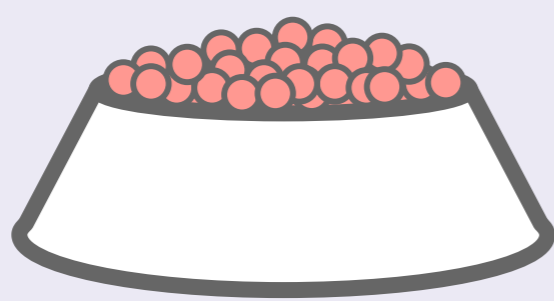
If storing Montego in an air-tight container, do not empty the kibble into the container. Instead, place the bag in the container. Residual fats and oils can remain in the container, which could contaminate the fresh batch and ultimately can lead to food poisoning and bacterial infection.



TIP 3:

PLACE ENOUGH KIBBLE FOR ONE MEAL IN EACH BOWL ONLY.

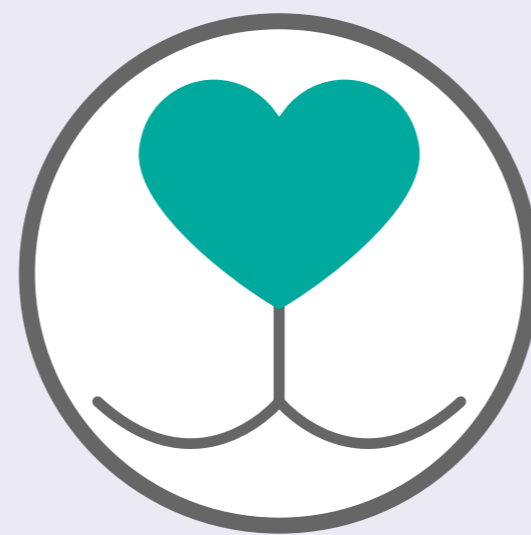
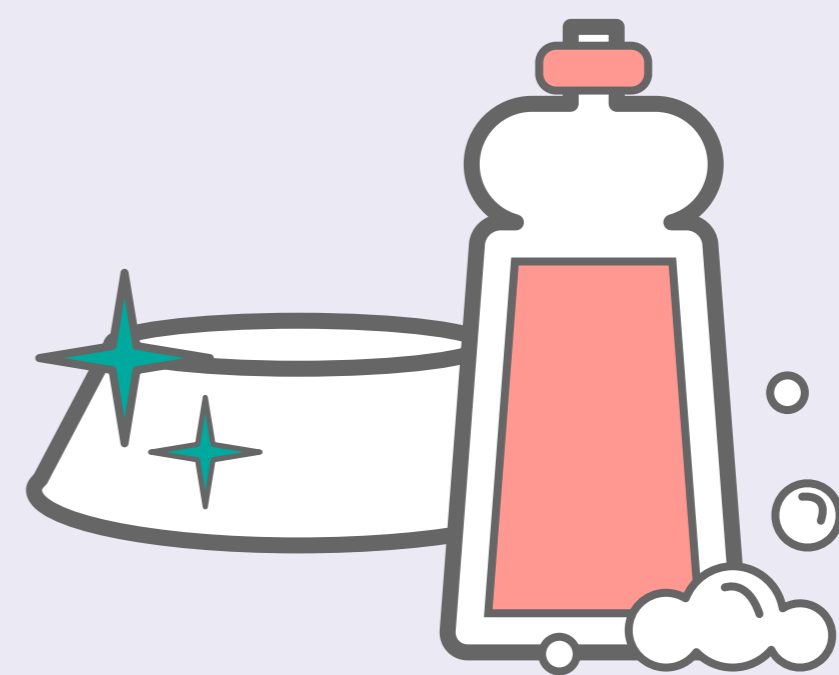
Never pour new kibble on top of old kibble. Kibble that's been standing for long periods of time can attract pesky insects, mould and other contaminants that are bad for dogs to ingest. Make sure to pour just enough kibble for each meal.



TIP 4:

WASH PET FOOD CONTAINERS AND BOWLS REGULARLY.

Wash bowls and containers regularly by using pet friendly cleaning agents and hot water. Rinse well and ensure that the container and bowls are dried.



As one of **SOUTH AFRICA'S TOP** PET FOOD MANUFACTURERS

we pride ourselves in delivering quality products every time.

Our recent **FSSC 22000 ACCREDITATION** confirms that we have one of the **CLEANEST FACTORIES** WORLD WIDE.



However, if you happen to purchase a bag of Montego from one of our retailers only to find that the kibble has been contaminated, please supply us with the date of manufacture (found on the back of your bag on the left hand side at the bottom, for e.g. 13 December 2016 E) as well as the name of the store where you have purchased the bag and we'll happily investigate.



WHOLESOME GOODNESS